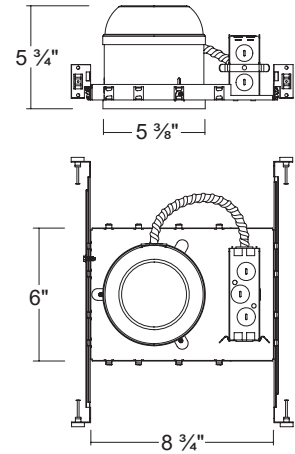


## H550SICA

5" IC Air-Tight Incandescent Shallow New construction Housing (Max. 75W)



### Dimensions



## ORDERING INFORMATION

Model No.	Description
H550SICA	5" IC Air-Tight Incandescent Shallow New construction Housing (Max. 75W)

## SPECIFICATION

### Plaster Frame

- Galvanized steel construction. The housing can be removed from plaster frame to provide access to the junction box

### Junction Box

- Listed for through branch circuit wiring
- Contains seven 7/8" knockouts and four Romex pryouts with strain relief

### Bar Hanger

- Pre-installed Real nail easily installs in regular lumber, engineered lumber
- Bar Hangers are adjustable from 13-5/8" to 25" and can be repositioned 90 degree on plaster frame

### Thermal Protector

- Self resetting thermal protector deactivates fixture if overheating occurs due to improper lamping or misapplied insulation.

### Listings

- cULus Listed for Damp Location
- cULus Listed for Feed Through
- Certified under ASTM-E283 for Air tight construction

## COMPATIBLE TRIMS

### T5518 Eyeball



- Incandescent  
75W BR / Par30

### T5513 AT Cone Baffle



- Incandescent  
75W BR / Par30

### T5519 Cone Smooth



- Incandescent  
60W A19

### T5516 Dome Shower



- Incandescent  
40W A19